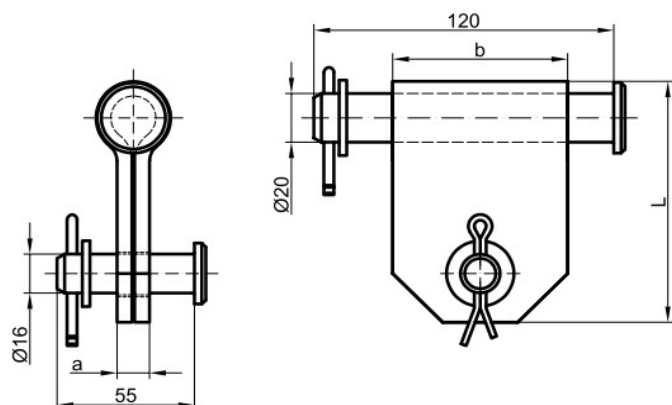



**CODE:** P806006  
**Item:** Twisted Double Clevis

## PRODUCT TECHNICAL SPECIFICATION

**Description:** Twisted Double Clevis is designed for tension support of medium voltage insulators and other medium voltage equipment. It is galvanize-coated and tough resistant on all weather conditions and corrosion.



No.	Code	Dimensions (mm)			SML (kN)	Product weight (g)	Barcode
		a	b	L			
1	P80-60-06	13	70	100	70	1095,00	 8605031015126

### Other characteristics

**Body material:** Steel alloy galvanized (other per client request)  
**Bolt / Fuse:** Steel alloy galvanized (other per client request)  
**Required tools:** Combination pliers or similar tool