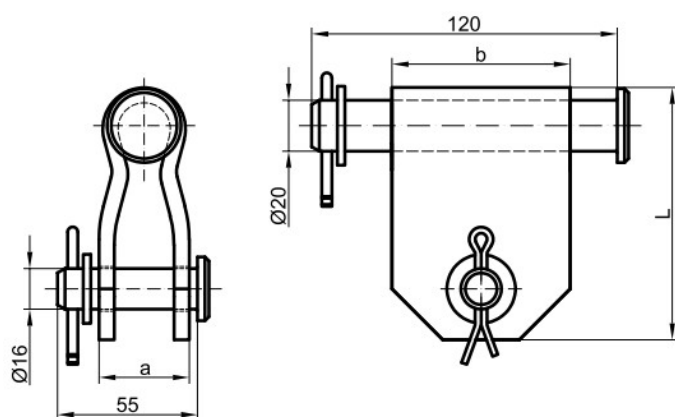



CODE: P806005
Item: Twisted Double Clevis

PRODUCT TECHNICAL SPECIFICATION

Description: Twisted Double Clevis is designed for tension support of medium voltage insulators and other medium voltage equipment. It is galvanize-coated and tough resistant on all weather conditions and corrosion.



No.	Code	Type	Dimensions (mm)			SML (kN)	Product weight (g)	Barcode
			a	b	L			
1	P80-60-05	Z01	38	70	100	70	1090,00	 8605031015119

Other characteristics

Body material: Steel alloy galvanized (other per client request)
Bolt / Fuse: Steel alloy galvanized (other per client request)
Required tools: Combination pliers or similar tool