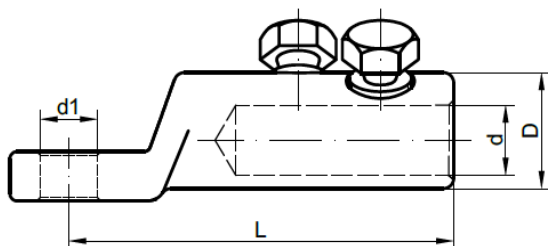







**CODE:** P40610x  
**Item:** Mechanical shear-head lugs low voltage

## PRODUCT TECHNICAL SPECIFICATION

**Description:** Mechanical shear-head lugs low voltage are designed to for terminating conductors and cables.



No.	Cable cross section (mm <sup>2</sup> )	Code	Type	Dimensions (mm)				Packing				Barcode
				D	d	d1	L	Prod. weight (g)	Bag packing (pcs)	Box packing (pcs)	Box BRUTO weight (kg)	
1	25-50	P40-61-01	ALPLL 25-50/12	21	11	13	68	117,30	50	150	18,09	 8605031008098
2	70-120	P40-61-02	ALPLL 70-120/12	28	17	13	90	178,80	25	100	18,37	 8605031008104
3	70-120	P40-61-03	ALPLL 70-120/16	28	17	17	90	174,30	25	100	17,92	 8605031008111
4	150-240	P40-61-04	ALPLL 150-240/12	35	23,5	13	113	258,60	25	50	13,42	 8605031008128
5	150-240	P40-61-05	ALPLL 150-240/16	35	23,5	17	113	253,80	25	50	13,18	 8605031008135

### Other characteristics:

**Body material:** Aluminum alloy / Conductive grease

**Required tools:** Wrench appropriate size

**Marking:** Manufacturer, cross section

**Standard:** IEC 61238-1

