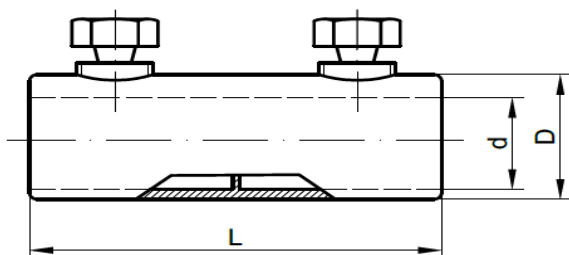






**CODE:** P40320x  
**Item:** Mechanical shear-head connectors low voltage

## PRODUCT TECHNICAL SPECIFICATION

**Description:** Mechanical shear-head connectors low voltage are designed to continue conductors and cables.



No.	Cable cross section (mm <sup>2</sup> )	Code	Type	Dimensions (mm)			Packing				Barcode
				D	d	L	Prod. weight (g)	Bag packing (pcs)	Box packing (pcs)	Box BRUTO weight (kg)	
1	10-35	P40-32-01	ALPCL 10-35	16	9	70	72,30	50	150	11,34	 8605031006483
2	25-70	P40-32-02	ALPCL 25-70	25	14	55	95,40	25	100	10,03	 8605031006490
3	70-120	P40-32-03	ALPCL 70-120	28	16	70	151,20	25	100	15,61	 8605031006506
4	150-240	P40-32-04	ALPCL 150-240	36	23	120	237,10	25	50	12,35	 8605031006513

### Other characteristics:

**Body material:** Aluminum alloy / Conductive grease

**Required tools:** Wrench appropriate size

**Marking:** Manufacturer, cross section

**Standard:** IEC 61238-1

